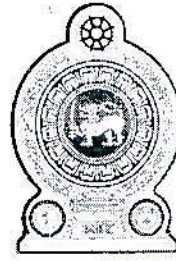


දුරකථන ) 0112669192 , 0112675011  
தொலைபேசி ) 0112694033, 0112675280  
Telephone ) 0112675449

ෆැක්ස් ) 0112693866  
பெக்ஸ் ) 0112693869  
Fax ) 0112692913

විද්‍යුත් තැපෑල ) postmaster@health.gov.lk  
மின்னஞ்சல் முகவரி )  
e-mail )

වෙබ් අඩවිය ) www.health.gov.lk  
இணையத்தளம் )  
website )



සුවසිරිපාය  
சுவசிரிபாய  
SUWASIRIPAYA

සෞඛ්‍ය හා ජනමාධ්‍ය අමාත්‍යාංශය

சுகாதார மற்றும் வெகுஜன ஊடக அமைச்சு

Ministry of Health & Mass Media

මගේ අංකය ) D/LS/EA/ Equipments  
எனது இல )  
My No. )

ඔබේ අංකය )  
உமது இல )  
Your No. )

දිනය )  
திகதி ) 22.05.2026  
Date )

General Circular Letter No: 01- 22/2026

All Deputy Director Generals  
All Provincial Directors of Health Services  
All Regional Directors of Health Services  
All Heads of Government Healthcare Institutions

### Guidelines on the Availability of Laboratory Equipment According to Designated Levels of Laboratories

The Ministry of Health and Mass Media recognises the vital role of laboratory services in supporting preventive, promotive, curative, rehabilitative, and palliative care. With increasing demand for high-quality diagnostics driven by technological advances, population growth, and evolving disease patterns, it is essential to ensure the availability of appropriate and standardized laboratory equipment across all health care institutions to sustain the quality and reliability of laboratory services.


Following a series of consultative meetings with relevant consultants, subject experts, and technical staff, the Directorate of Laboratory Services has developed a structured laboratory equipment list aligned with designated laboratory levels. This covers the four core disciplines: Microbiology, Histopathology, Biochemistry, and Hematology.

Equipment requirements are categorized as follows:

- Level 1 – Primary Medical Care Units (PMcus)
- Level 2 – Divisional Hospitals (Type A, B, C)
- Level 3B – Base Hospitals (Type B)
- Level 3A – Base Hospitals (Type A)
- Level 4B – District General Hospitals
- Level 4A – National, Teaching, and Specialized Hospitals (Excluding MRI categorized as Level 05)

All institutions are hereby instructed to adhere to these standardized lists in planning, procurement, and utilization of laboratory equipments. The equipment lists are attached as an Annexure. Compliance with these guidelines is essential to ensure the quality, efficiency, and sustainability of laboratory services.

For further clarification, please contact the Director of Laboratory Services at 0112673135 or email dlabservices.moh@gmail.com.

  
Dr. Asela Gunawardena  
Director General of Health Services

**Dr. ASELA GUNAWARDENA**  
Director General of Health Services  
Ministry of Health and Mass Media  
"Suwasiripaya"  
Rev. Baddegama Wimalawansa Thero Mawatha  
Colombo 10.

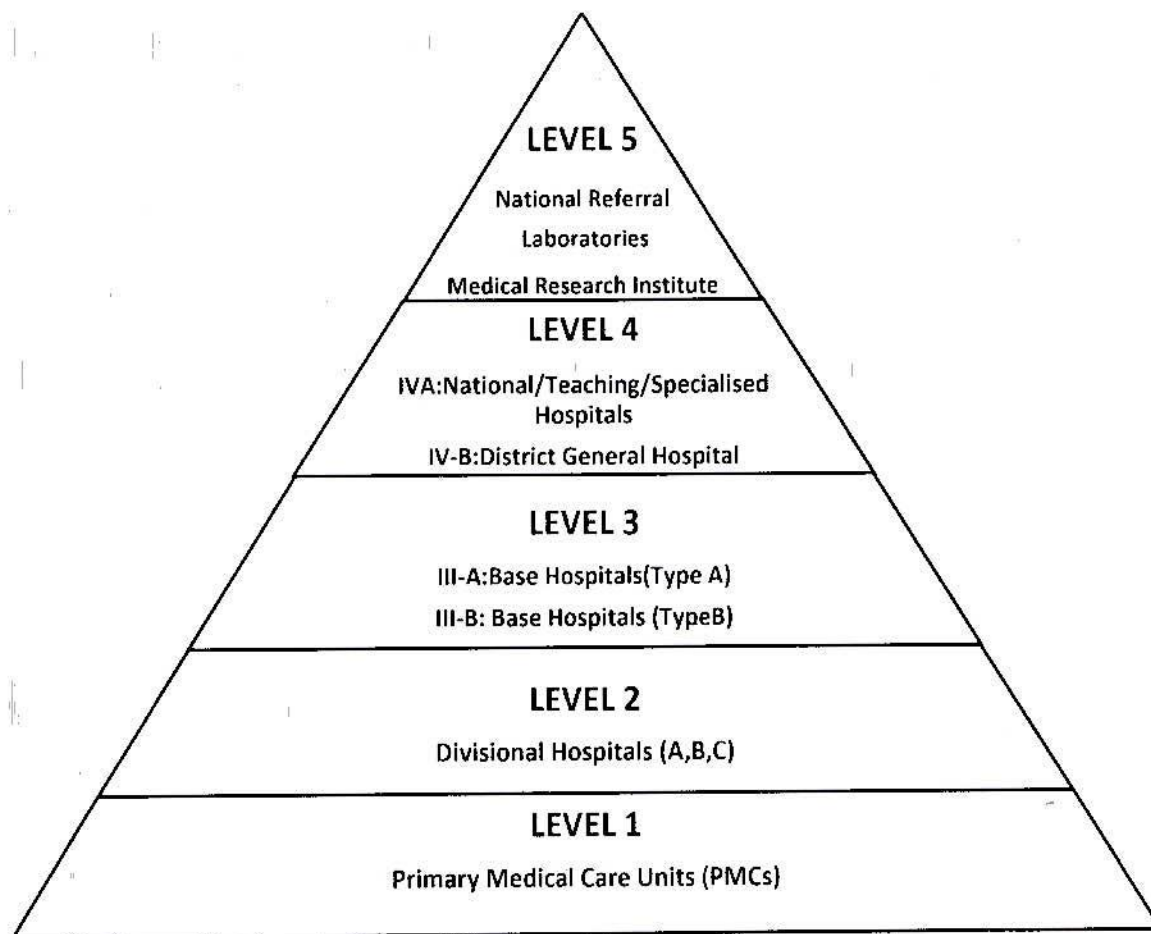
Cc:

01. Secretary, Ministry of Health & Mass Media,
02. Deputy Director General of Laboratory Services

## Guidelines on the Availability of Laboratory Equipment According to Designated Levels of Laboratories

The laboratory Equipment requirements are categorized as per the laboratory levels.

**Figure 01: Classification of Laboratory Service Levels in Sri Lanka**



Level 1	-	Primary Medical Care Units (PMCU)s
Level 2	-	Divisional Hospitals (Type A, B, C)
Level 3A	-	Base Hospitals (Type A)
Level 3B	-	Base Hospitals (Type B)
Level 4A	-	National, Teaching, and Specialized Hospitals
Level 4B	-	District General Hospitals
Level 05	-	MRI

This document presents the following four main laboratory specialties.

1. Biochemistry
2. Hematology
3. Histopathology
4. Microbiology

**Table 01: Chemical Pathology Equipment List**

No	Equipment	Level IV A	Level IV B	Level III A	Level III B	Level II
1	Autoclave	√	√	√	√	O
2	Biochemistry Analyzer Fully Automated with ISE	√	√	√*	√**	x
3	Biochemistry Analyzer Fully Automated without ISE	√	√	√*	√**	O**
4	Biochemistry Analyzer Semi-Automated (Colorimeter)	x	x	x	√	√
5	Capillary Electrophoresis	√	√	x	x	x
6	Centrifuge	√	√	√	√	√
7	ELISA Washer and Reader	√	x	x	x	x
8	Freezer – 20 °C	√	√	√	x	x
9	Freezer - 80 °C	√	x	x	x	x
10	Gel Electrophoresis	√	√	x	x	x
11	Hormone Assay System - Fully Automated	√	√	√***	√***	x
12	Hot Air Oven	√	√	x	x	x
13	HPLC	√	√	√****	√****	x
14	ISE Machine	√	√	O	x	x
15	Laboratory Refrigerator	√	√	√	√	O
16	Microscope – Light	√	√	√	√	√
17	Microcentrifuge	√	x	x	x	x
18	Osmometer	√	√	x	x	x
19	PH Meter	√	√	x	x	x
20	PUCT Cardiac Marker (HS Troponin I)	√	√	√	√	x
21	Refrigerator (Domestic)	√	√	√	√	√
22	Refrigerated Centrifuge	√	√	x	x	x
23	Roller Mixer	√	√	√	x	x
24	Spectrophotometer	√	x	x	x	x
25	Urine Analyzer (Automated)	√	O	x	x	x
26	Vortex Mixer	√	√	√	√	O
27	Water Bath	√	√	x	x	x
28	Water Distiller Machine	√	√	√	O	O

√ - Available

x - Not Available

O – Optional

\* Throughput is less than 400 per hour

\*\* Throughput is less than 200 per hour

\*\*\* Throughput is less than 40 per hour

\*\*\*\* Only for HbA1c

**Table 02: Haematology Equipment List**

No	Equipment	Level IV-A	Level IV-B	Level III-A	Level III-B	Level II
1	Analytical Balance	√	√	√	√	√
2	Automated ESR apparatus Traceable to Westergren Method	√	x	x	x	x
3	Capillary Electrophoresis	√	√	x	x	x
4	Centrifuges-Bench Top	√	√	√	√	√
5	Coagulation Analyzer - Fully Automated	√	√	√	x	x
6	Coagulation Analyzer - Semi-Automated (2/4 channel)	√	√	√	√	x
7	Flow cytometer	√	x	x	x	x
8	Freezer -20 °C	√	√	√	x	x
9	Haematology Analyzer - 5 part	√	√	√	√	√*
10	Haematology Analyzer - 7 part	√	√	√	x	x
11	Hematocrit Centrifuge	√	√	√	√	√
12	Hot Air Oven	√	√	√	√	√
13	HPLC	√	√	x	x	x
14	Laboratory Incubator	√	√	√	x	x
15	Laboratory Refrigerator	√	√	√	√	√
16	Light Microscope	√	√	√	√	√
17	Manual DC Counter- Extended Panel, Digital	√	√	√	√	√
18	Microscope (Dual Head)	√	√	√	√	√
19	Microscope (Multihead)	√	x	x	x	x
20	Microscope (Teaching)	√	x	x	x	x
21	Platelet Aggregometer	√	x	x	x	x
22	Refrigerator (Domestic)	√	√	√	√	√
23	Roller Mixtures	√	√	√	√	√
24	Real Time PCR Machine	√	x	x	x	x
25	Slide Storing Cabinet	√	√	√	x	x
26	Slide Stainer (Automated)	√	O *	x	x	x
27	Spectrophotometry	√	√	√	x	x
28	Thermoelectrometry/ Thromboelastogram	√	√	x	x	x
29	Water Bath	√	√	√	√	√
30	Water Distiller Machine	√	√	√	√	√

√ - Available

x - Not Available

O – Optional

\* Low throughput

**Table 03: Histopathology Equipment List**

No.	Equipment	Level IV-A	Level IV-B	Level III-A
1	Cassette Printer	✓	✓	x
2	Centrifuge	✓	✓	✓
3	Cover Slip Machine (Automated)	✓	O	x
4	Digital Camera with a Microscope and Computer	✓	✓	O
5	Digital Slide Scanner	✓ *	x	x
6	Floating Water Bath	✓	✓	✓
7	Formalin Neutralizer	✓	O	O
8	Formalin recycler	✓	✓	✓
9	Formalin Concentration Monitor	✓	✓	✓
10	Frozen Cryostat	✓	O	x
11	Grossing Station	✓	✓	✓
12	Hot Air Oven	✓	✓	✓
13	IHC Analyzer, Fully Automated	✓ **	x	x
14	Laboratory Refrigerator	✓	✓	✓
15	Microscope (Fluorescent)	✓	O	x
16	Microscope (Dual)	✓	✓	✓
17	Microscope multi-head	✓	O	x
18	Microtome	✓	✓	✓
19	Slide Storing Cabinet	✓	✓	✓
20	Slide Stainer (Automated)	✓	✓ ***	x
21	Slide Warmer	✓	✓	✓
22	Specimen Storing Cabinet	✓	✓	✓
23	Tissue Embedding System	✓	✓	✓
24	Tissue Processor (Automated)	✓	✓	✓
25	Water Distiller Machine	✓	✓	✓
26	Wax Blocks Storing Cabinet	✓	✓	✓

✓ - Available

X - Not Available

O - Optional

\* Selected National Hospitals only

\*\* National Hospitals, selected Teaching Hospitals and NCI - Maharagama only

\*\*\* Low throughput

**Table 04: Microbiology Equipment List**

No	Equipment	Level IV A	Level IV B	Level III A	Level III B	Level II	Level I
1	Analytical Balance	√	√	√	x	x	x
2	Antibiotic Level Monitoring Equipment	√	x	x	x	x	x
3	Bio-Safety Cabinet– Class II A2 with external duct system	√	O	x	x	x	x
4	Bio-Safety Cabinet– Class II A2 with recirculation	√	√	√	x	x	x
5	Blood Culture System (Automated)	√	√	√	x	x	x
6	Cartridge-Based PCR system	√	√	O	x	x	x
7	Centrifuge	√	√	√	x	x	x
8	CO <sub>2</sub> Incubator	√*	O	x	x	x	x
9	Cooling Centrifuge (Refrigerated centrifuge)	√**	x	x	x	x	x
10	Deep Freezer (-20°C) (Laboratory)	√	√	O	x	x	x
11	Deep Freezer (-80 ° C)	√	√	x	x	x	x
12	Densitometer	√	O	O	x	x	x
13	Digital Thermometers	√	√	√	x	x	x
14	ELISA Washer	√*	√*	O	x	x	x
15	ELISA Reader	√*	√*	O	x	x	x
16	Heat Block	√*	O	x	x	x	x
17	Hot Air Oven	√	√	√	x	x	x
18	ID and ABST System Automated	√	O	O	x	x	x
19	Incubator with Inbuilt Digital Thermometer	√	√	√	x	x	x
20	Laboratory Autoclave	√	√	√	x	x	x
21	Microscope Light	√	√	√	x	x	x
22	Magnetic Stirrer	√*	x	x	x	x	x
23	Mini-Centrifuge	√	√	x	x	x	x
24	Nucleic acid extractor following local assessment, Automated	√*	x	x	x	x	x
25	Oxford Nanopore	√***	x	x	x	x	x
26	PCR hood	√*	O	x	x	x	x
27	pH Meter	√	√	√	x	x	x
28	Pharmaceutical/Laboratory Refrigerator	√	√	√	x	x	x
29	Pharmaceutical/Laboratory Refrigerator	√	√	√	x	x	x
30	Real Time PCR system	√*	x	x	x	x	x
31	Refrigerator (Domestic)	√	√	√	x	x	x
32	Serology tests in equivalent equipment	√	x	x	x	x	x
33	Serology Analyser Automated	√*	x	x	x	x	x

Continued...

No	Equipment	Level IV A	Level IV B	Level III A	Level III B	Level II	Level I
34	Thermomixer /shaker	√ *	x	x	x	x	x
35	Vortex Mixer	√	√	√	x	x	x
36	Water Bath	√	√	√	x	x	x
37	Water Bath Shaker Electric	√ ***	x	x	x	x	x
38	Water Distiller Machine	√	√	√	x	x	x

√ - Available

X - Not Available

O - Optional

\* Only for National Hospital, virology laboratories

\*\* For Anaerobic testing facilities only

\*\*\* Only for National Hospital Galle & National Hospital Kandy, virology laboratories

